

# Environmental Health

NIES–St Luke's International University  
1 July 2021

Shoji F. Nakayama, MD, PhD

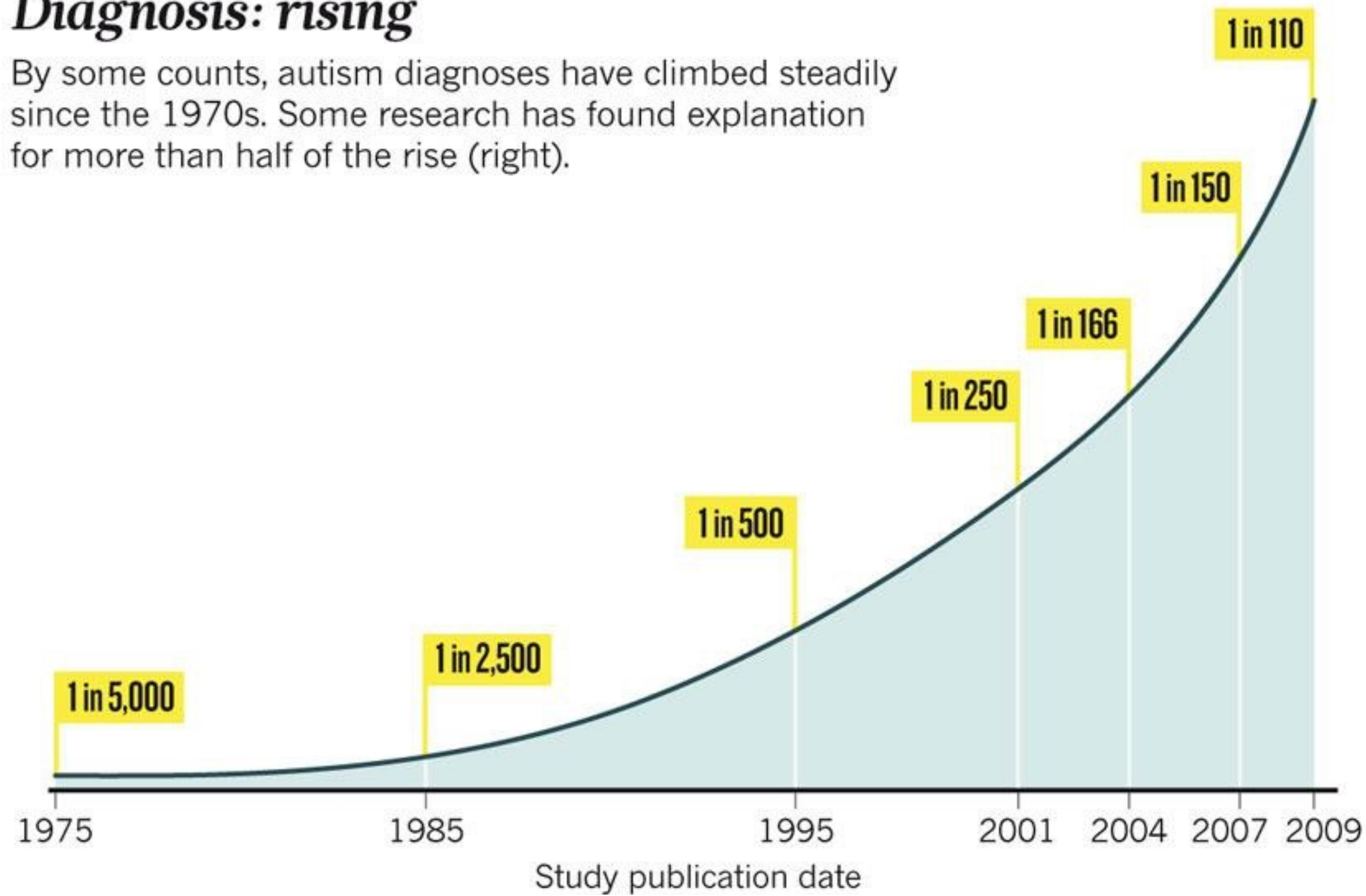
Deputy Director  
Japan Environment and Children's Study Programme Office  
National Institute for Environmental Studies

Professor  
Graduate School of Public Health  
St Luke's International University

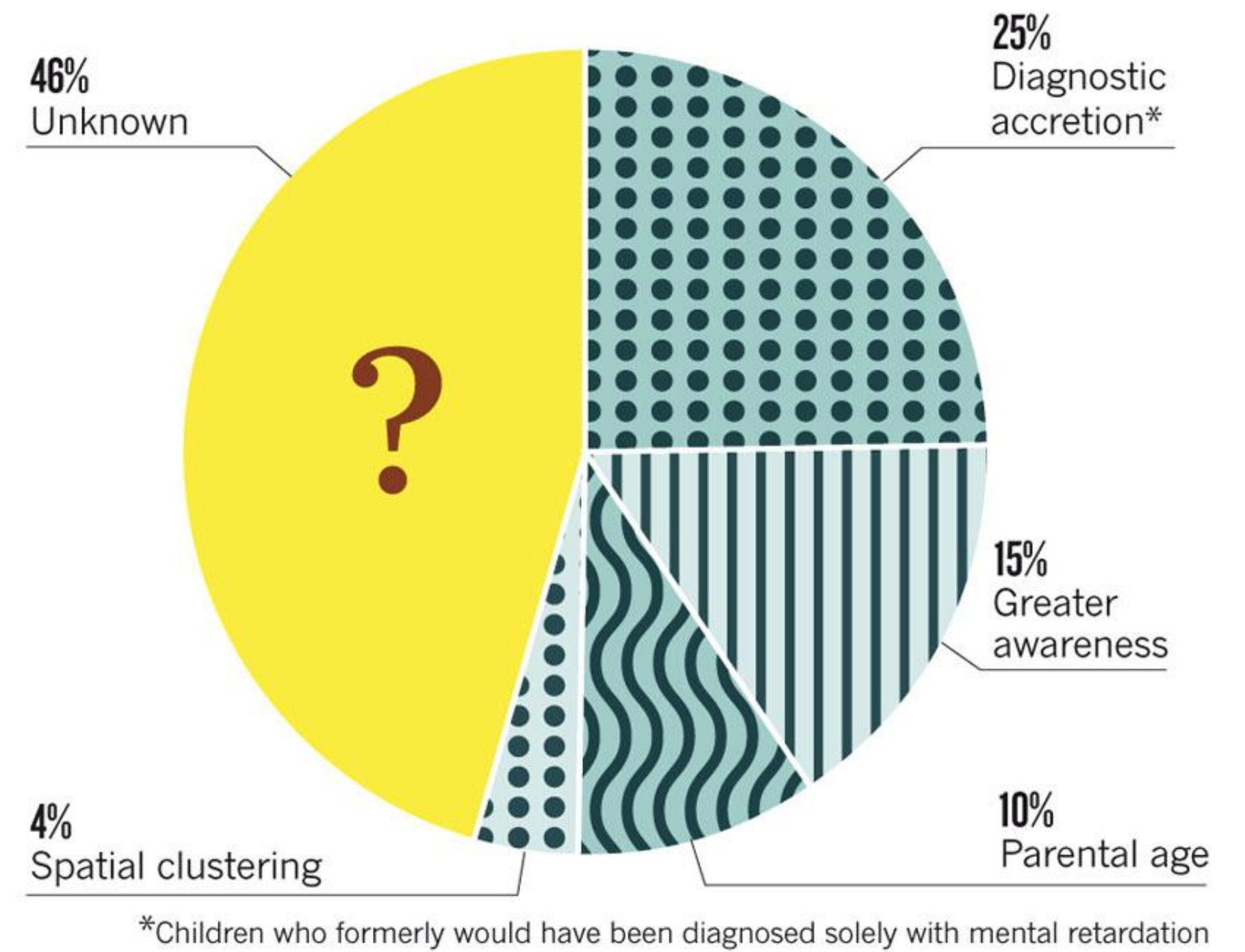
# Clear and present danger

## Diagnosis: rising

By some counts, autism diagnoses have climbed steadily since the 1970s. Some research has found explanation for more than half of the rise (right).



## Reasons: unclear



# Clear and present danger

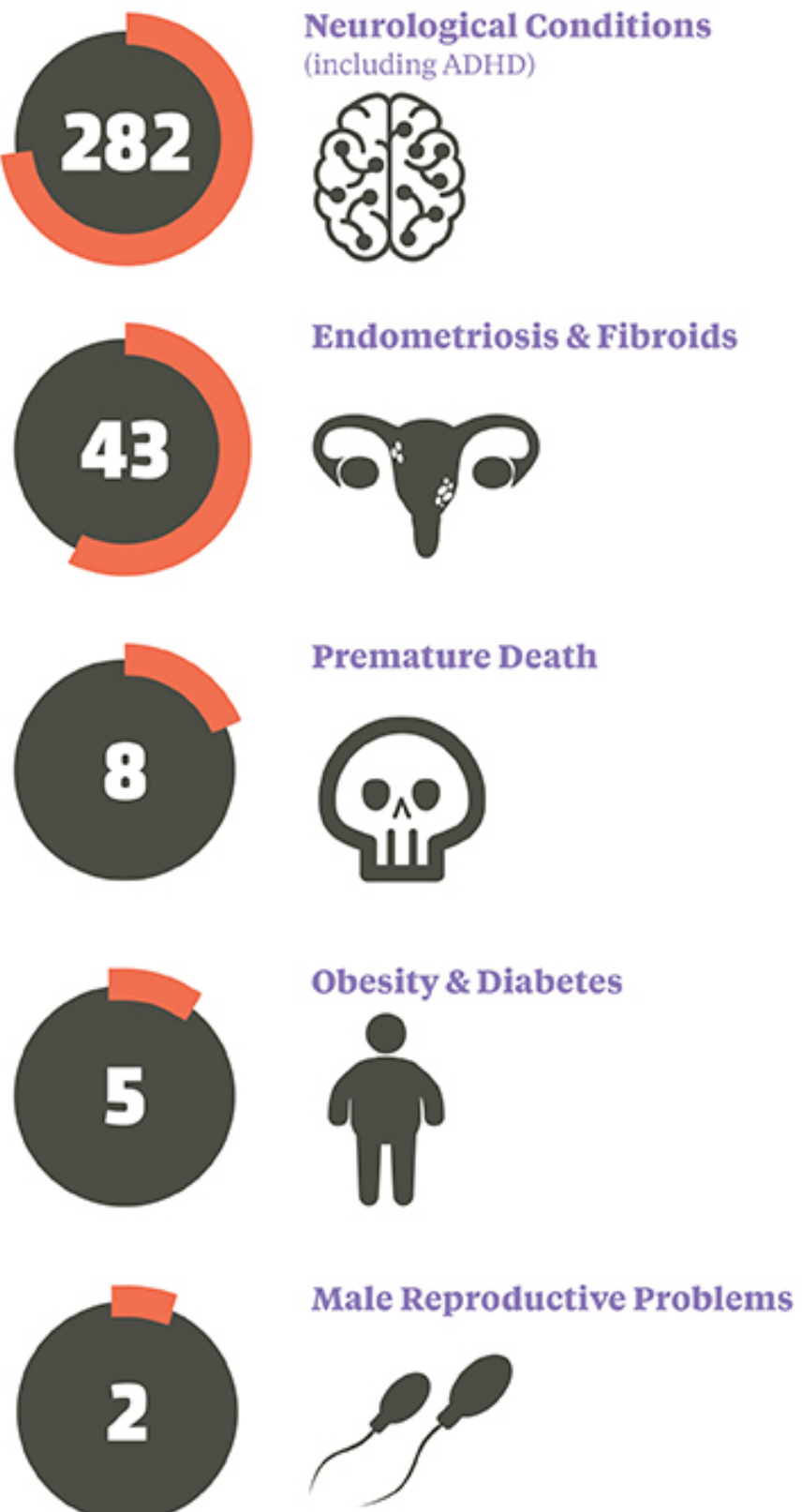
## Health Effects From Endocrine Disrupting Chemicals Cost The U.S.

**\$340** Billion Annually

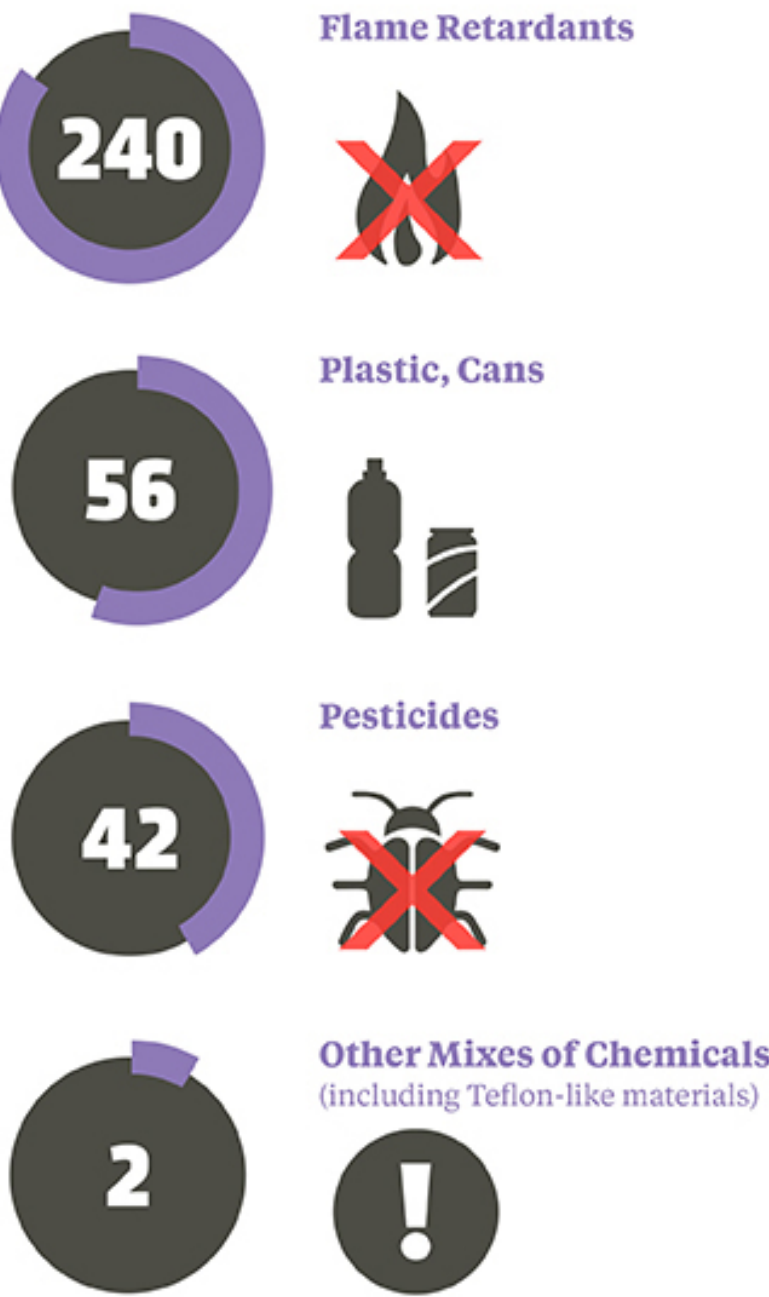
Endocrine Disrupting Chemicals (EDCs) interfere with hormone action to cause adverse health effects in people.

Corresponds to 2.33% of GDP

### \$340 Billion by Health Effect



### \$340 Billion by EDC Type



# Japan Environment and Children's Study (JECS)

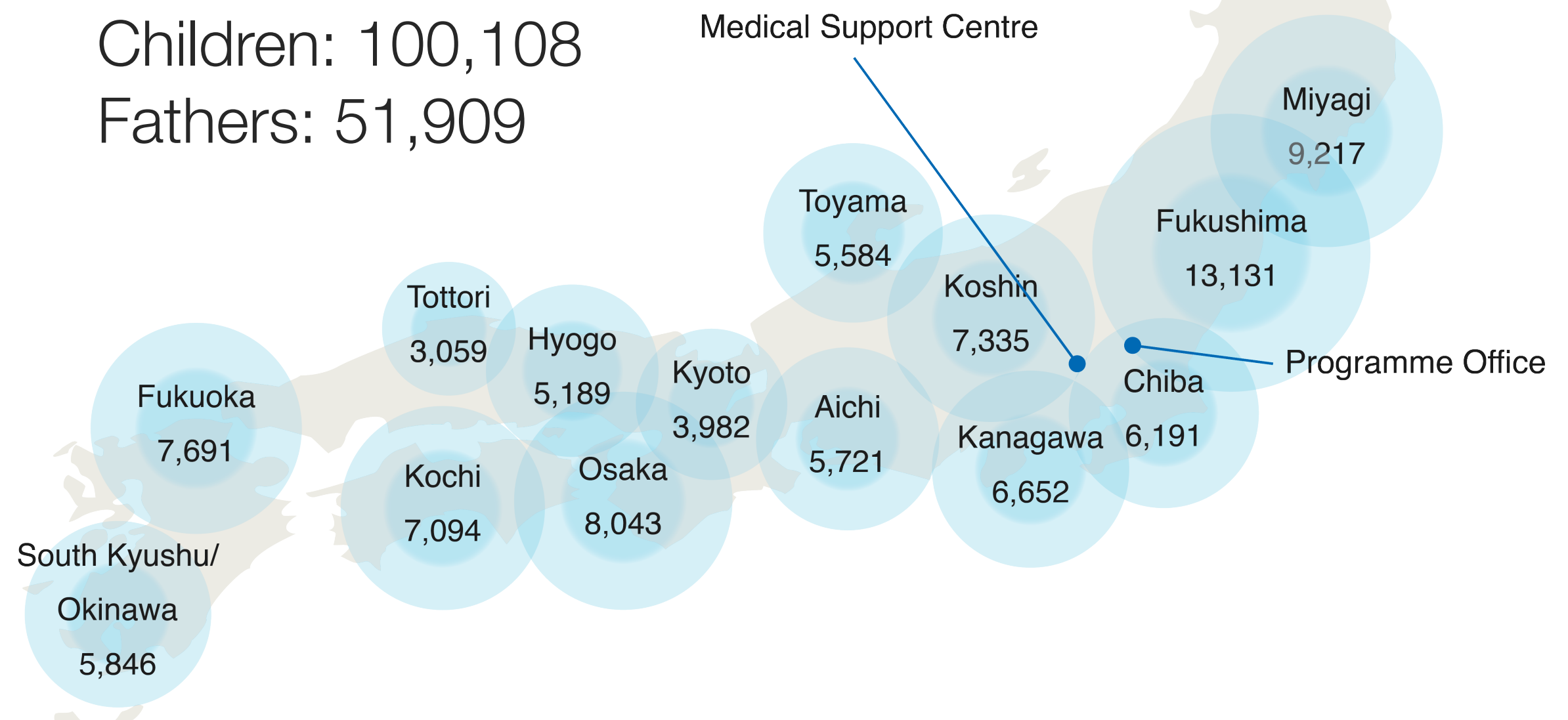


**The Japan Environment and Children's Study**

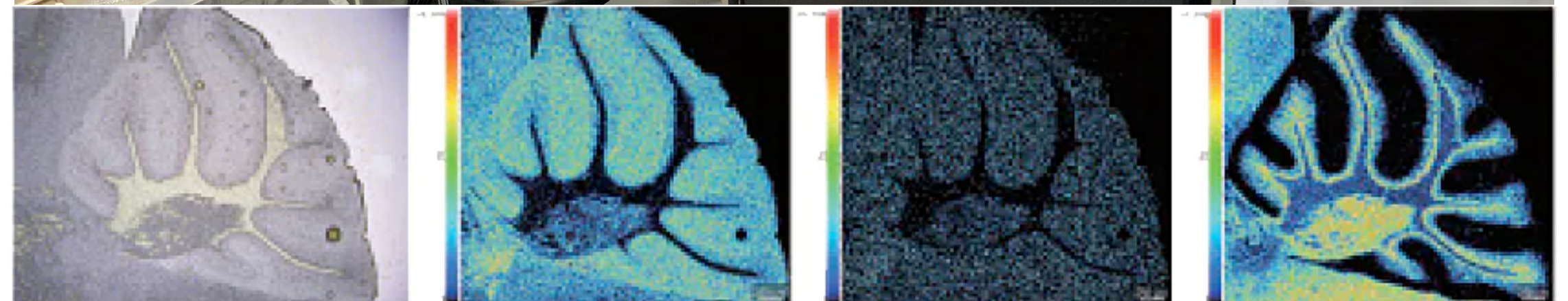
For the future crew of the Earth

How can we keep the environment healthy and hand it over to the next generations? The Japan Environment and Children's Study (JECS) started in 2011 is to answer such a question by investigating a wide range of environmental factors that could affect children's health and development.

Mothers: 103,097  
 Children: 100,108  
 Fathers: 51,909



# Our lab



光学顕微鏡像

$m/z$  885.55

$m/z$  888.57

$m/z$  888.63

# St Luke's School of Public Health

- ▶ The mission of the St. Luke's Graduate School of Public Health (SLGSPH) is to contribute to the maintenance and promotion of human health both in Japan as well as globally. This will be achieved by providing the highest quality of graduate level public health education and training, in line with global standards, to highly motivated individuals and cultivating their critical thinking and problem-solving skills to address a variety of domestic and foreign problems.



# St Luke's School of Public Health

- ▶ Brochure: <http://university.luke.ac.jp/sph/brochure/html5.html>
- ▶ Degrees:
  - ▶ Master of Public Health
  - ▶ Doctor of Public Health

