

2018 Workshop on GHG Inventory in Asia (WGIA16)

New Delhi, India, July 10-13, 2018

# Updates on the Third National Communication (TNC) and initial Biennial Update Report (iBUR) of the Mongolia



Sanaa Enkhtaivan, Gerelmaa Shaariibuu and Tegshjargal Bumtsend

Climate Change Project Implementing Unit at the  
Environment and Climate Fund under the  
Ministry of Environment and Tourism, Mongolia

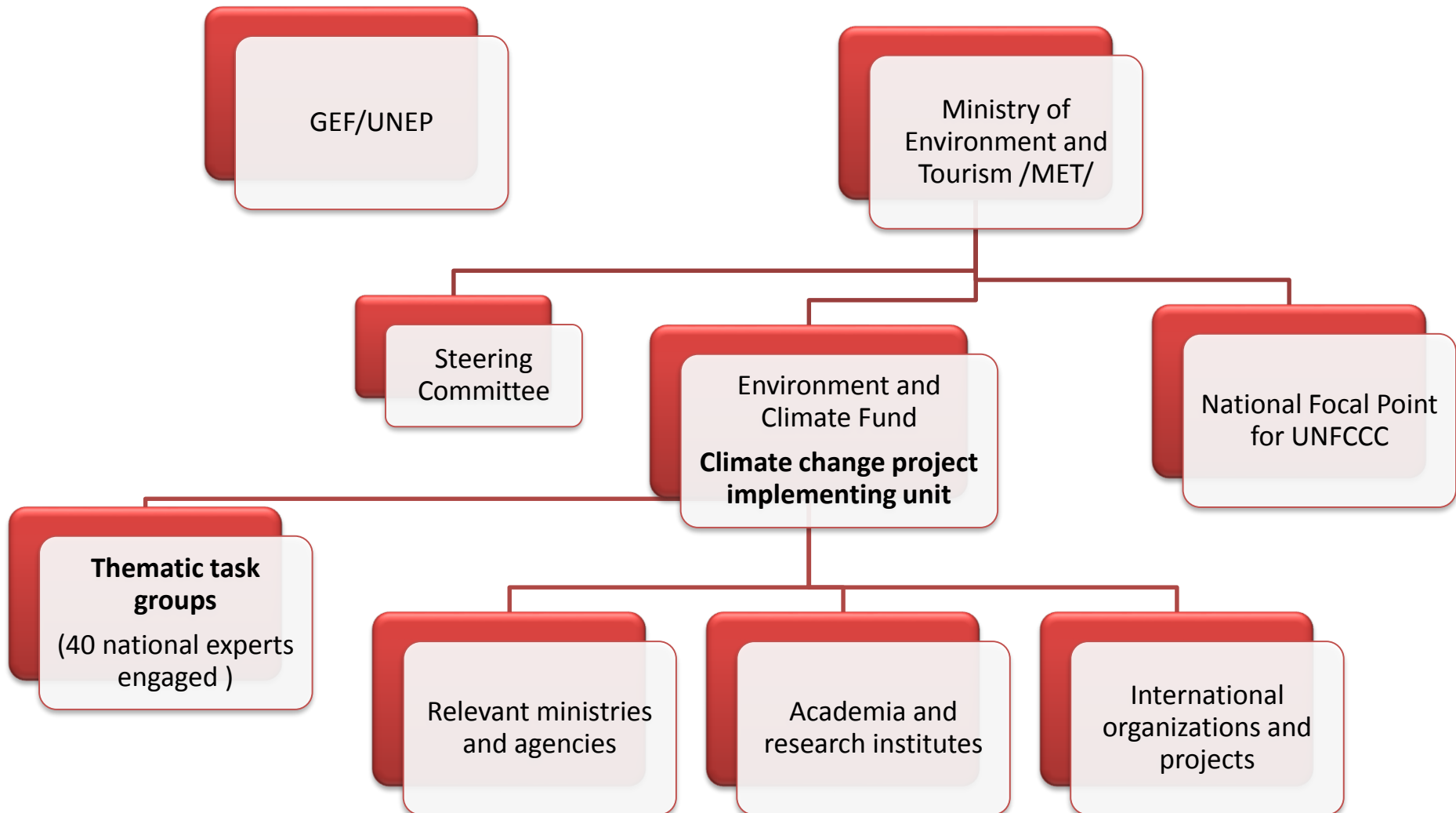
# Mongolia's NC and BUR reports

Report	Submission Year	GHG Inventory Year	Methodology
First National Communication	2001	1990-1998	1996 IPCC Revised Guidelines
Second National Communication	2010	1990-2006	1996 IPCC Revised Guidelines
Initial BUR	2017	1990-2014	2006 IPCC Guidelines
Third National Communication	2018		

# Contents of TNC and iBUR reports

Third National Communication (TNC)	Initial Biennial Updated Report (iBUR)
National circumstances	National Circumstances
GHG Inventory (1990-2014)	GHG Inventory (1990-2014)
Adaptation and Mitigation measures	Mitigation Actions and Effects
Other relevant information	Finance, Technology and Capacity Building
Constraints & Gaps	+ Annex (National Inventory Report)
<b>Officially published online on 23 April, 2018:</b> <a href="https://unfccc.int/sites/default/files/resource/2018%20Mongolia%20TNC%20EN.pdf">https://unfccc.int/sites/default/files/resource/2018%20Mongolia%20TNC%20EN.pdf</a>	<b>Officially published online on 30 August, 2017:</b> <a href="https://unfccc.int/files/national_reports/non-annex_i_parties/biennial_update_reports/application/pdf/mongolia_bur1_resubmission_and_annexnir.pdf">https://unfccc.int/files/national_reports/non-annex_i_parties/biennial_update_reports/application/pdf/mongolia_bur1_resubmission_and_annexnir.pdf</a>

# Implementation arrangement of TNC and iBUR projects

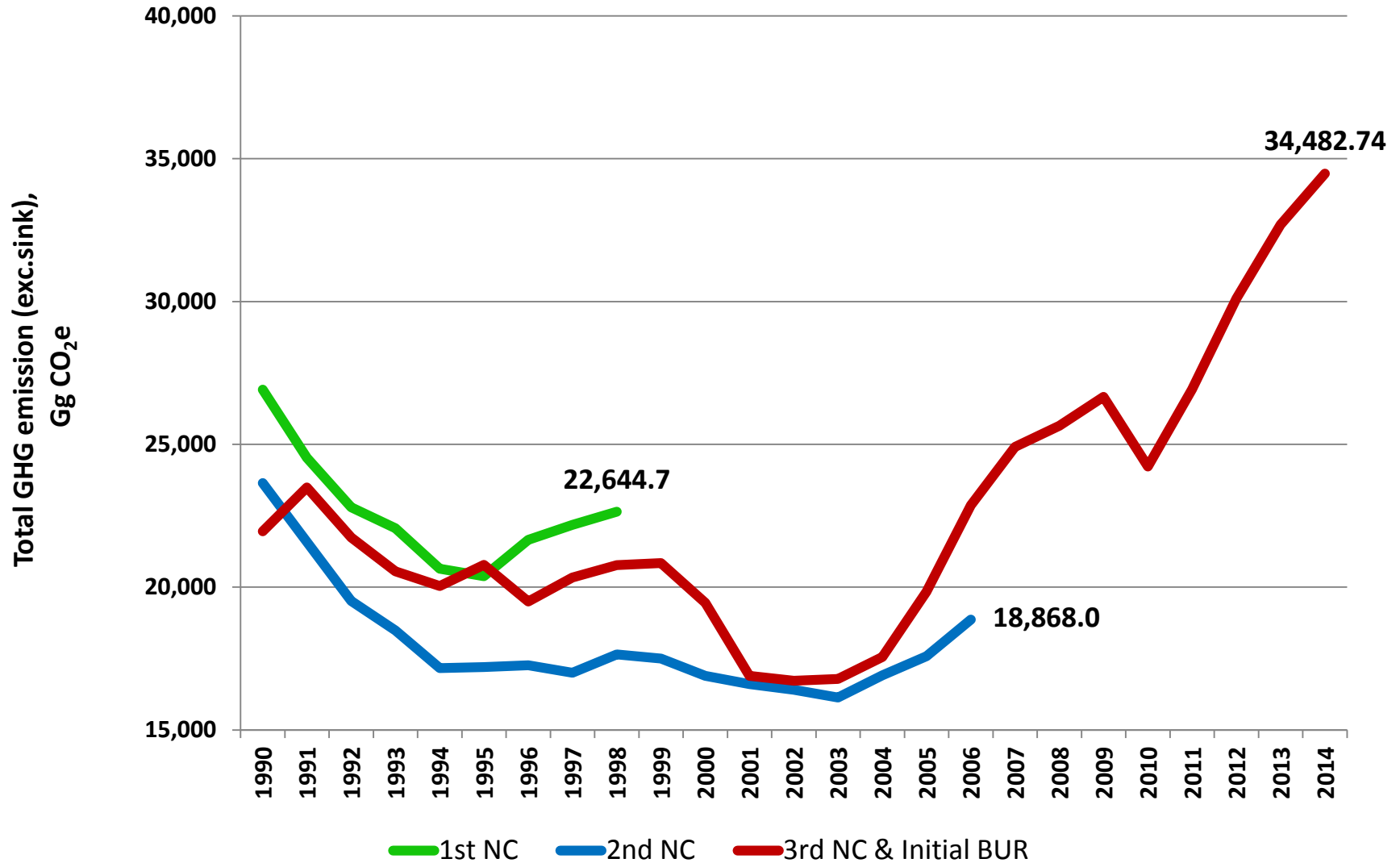


# Data sources for the GHG Inventory

Data source levels	Energy	Industrial processes and product use	Agriculture, Forest and Other Land Use	Waste
<b>1<sup>st</sup></b>	National Statistics Office*			
<b>2<sup>nd</sup></b>	Ministry of Energy*, Ministry of Road and Transport, Ministry of Mining*, Mongolian University of Science and Technology (MUST)	Ministry of Industry*, Ministry of Agriculture*, Ministry of Finance	Ministry of Agriculture*, Ministry of Construction and Urban Development*, MAS: Research Institutes, Universities: NUM, MULS Ministry of Environment and Tourism: FRDC, Environmental Information Center GIZ, UNREDD, FAO	Municipality of UB city*/Mayor office of UB city, Ministry of Construction and Urban Development*, Ministry of Industry*, Ministry of Agriculture* Water supply and sewerage authority of UB city
<b>3<sup>rd</sup></b>	IEA, FAOSTAT etc.,			

(\*established MoU in May, 2015)

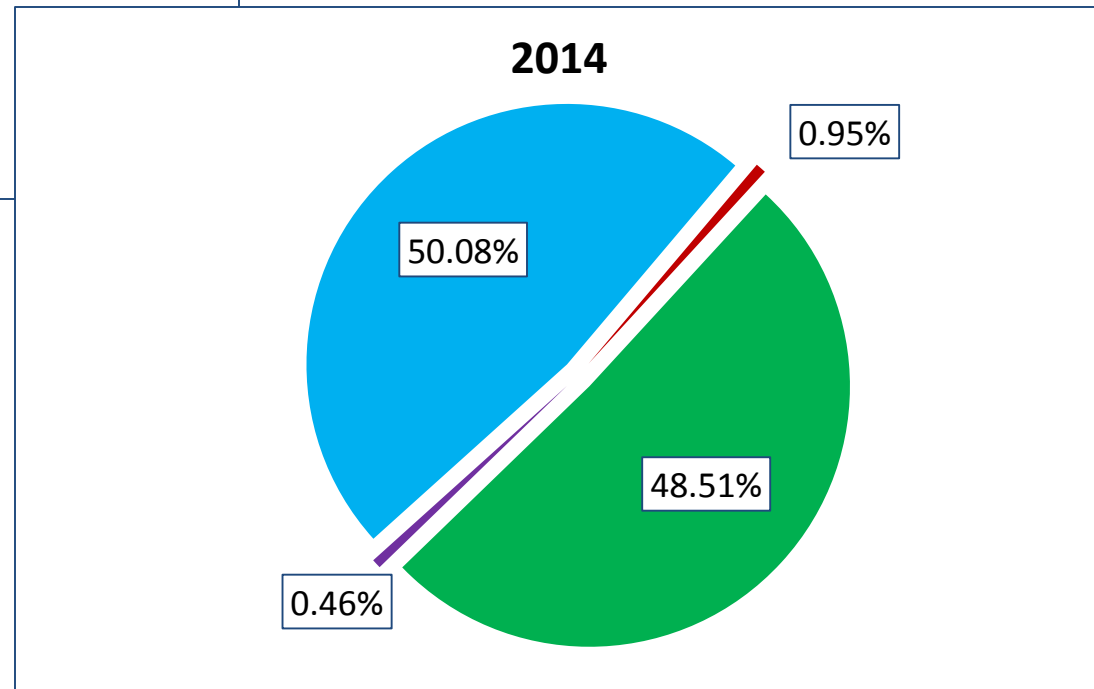
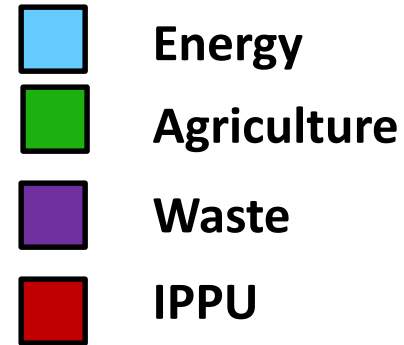
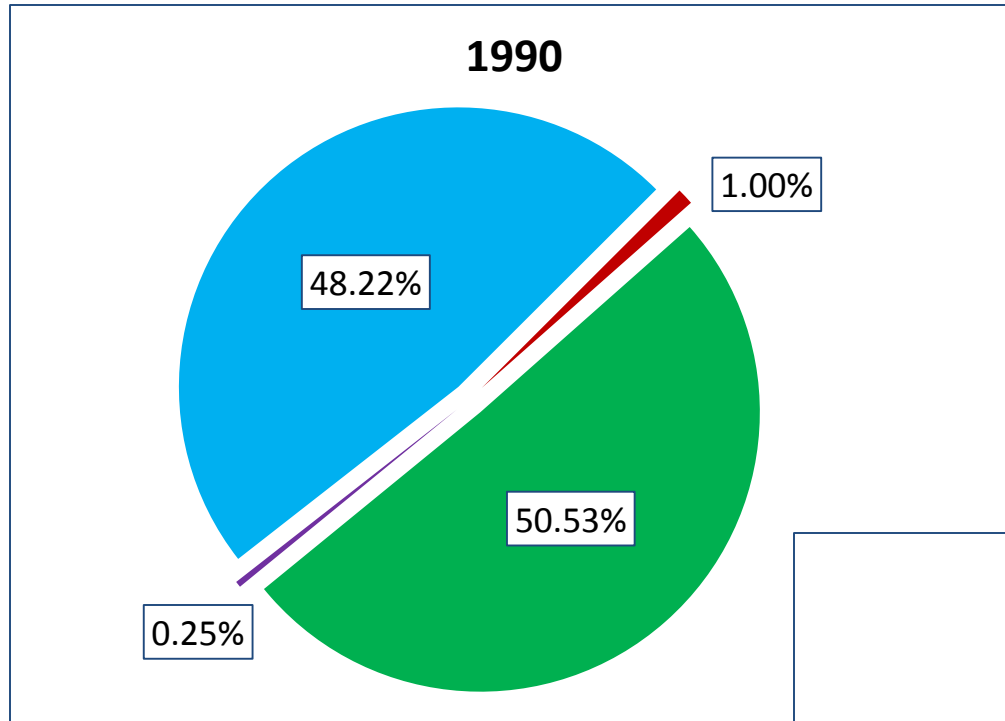
# Comparison of GHG emissions in the submitted documents



# Mongolia's total GHG emissions/removals Gg CO<sub>2</sub>e

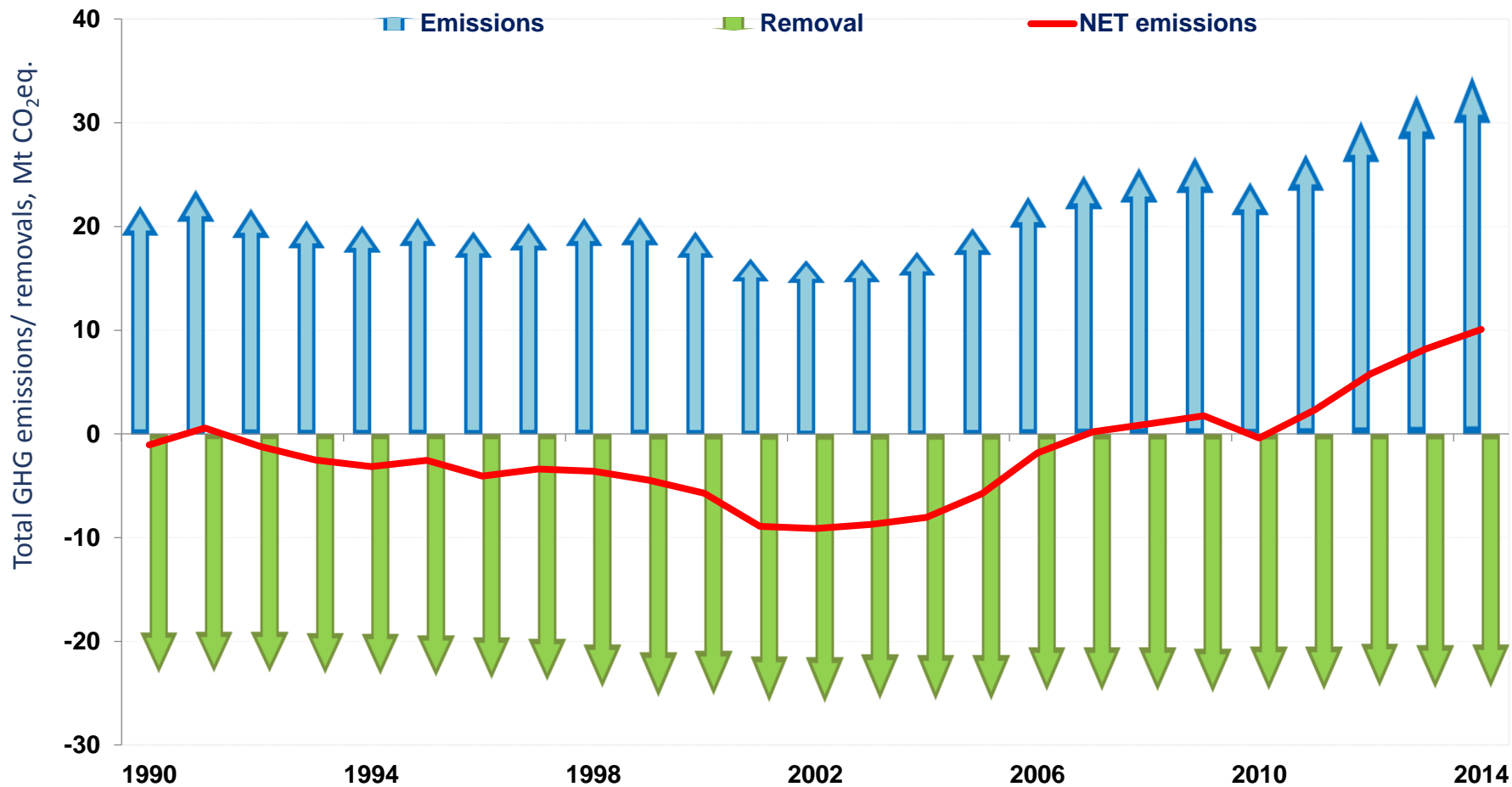
GHG categories	GHG emissions/removals (Gg CO <sub>2</sub> e)		Difference 1990 (Gg CO <sub>2</sub> e)	Difference (%)
	1990	2014		
<b>Energy</b>	11,091.14	17,267.79	6,176.64	55.69
<b>Industrial processes and product use</b>	218.66	328.06	109.39	50.03
<b>Agriculture</b>	10,585.30	16,726.98	6,141.68	58.02
<b>Waste</b>	55.62	159.91	104.29	187.49
<b>Total (excl. LULUCF)</b>	21,950.73	34,482.73	12,532.00	57.09
<b>LULUCF</b>	-23,024.18	-24,451.93	-1,427.75	6.20
<b>Total (incl. LULUCF)</b>	-1,073.46	10,030.80	11,104.26	1,034.44

# GHG emissions (by sectors 1990, 2014)



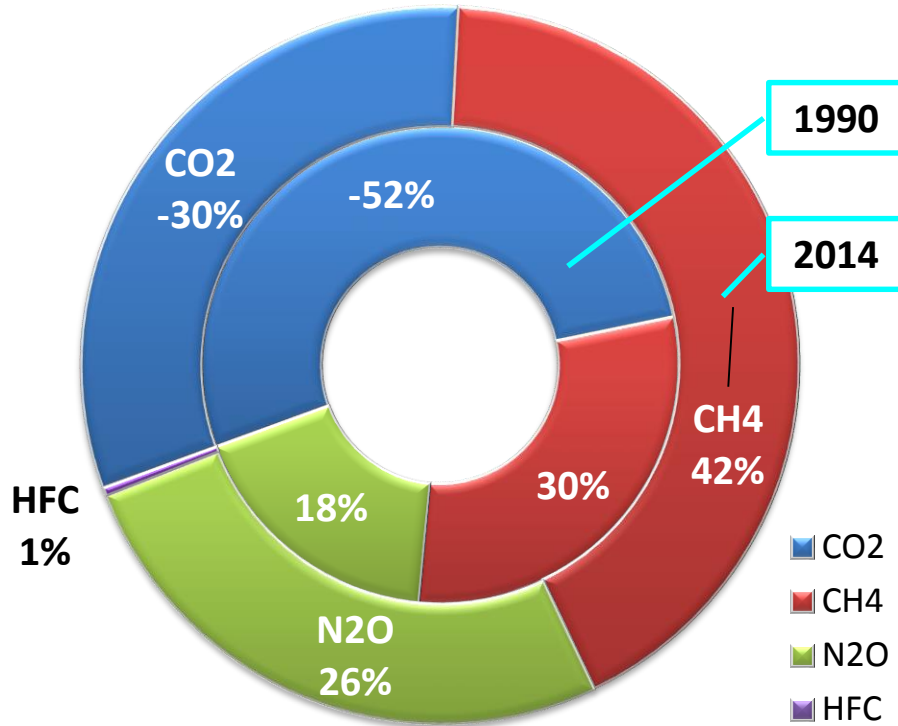


# Mongolia's total GHG emissions/removals Mt CO<sub>2</sub>e between 1990 and 2014

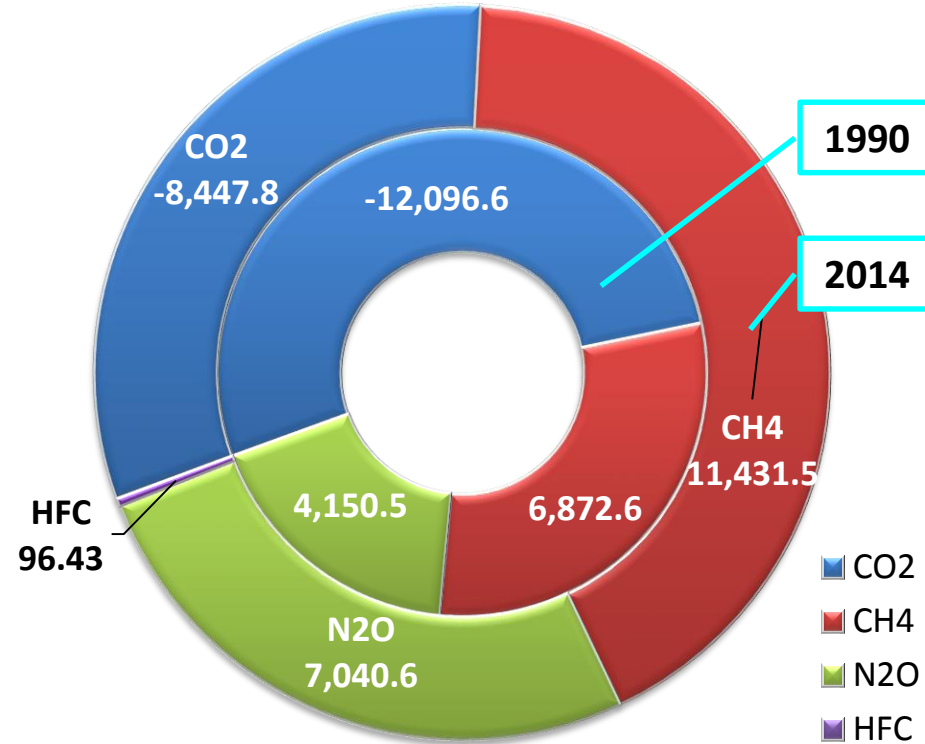


# GHG emissions (by gases)

By gases, %



By gases, Gg CO<sub>2</sub>e



Greenhouse gases	1990 (Gg CO <sub>2</sub> e)	2014 ( Gg CO <sub>2</sub> e)	Difference 2014/1990
Carbon dioxide (CO <sub>2</sub> )	-12,096.6	-8,447.8	-30%
Methane (CH <sub>4</sub> )	6,872.6	11,431.5	66%
Nitrous oxide (N <sub>2</sub> O)	4,150.5	7,040.6	69%

# Key category analysis (KCA)

IPCC code	IPCC Categories	Gases	1990 (Gg CO <sub>2</sub> e)	2014 (Gg CO <sub>2</sub> e)	Cumulative total, %
3.B.1.a	Forest land remaining forest land	CO <sub>2</sub>	-22,795.133	-24,634.302	0.522
3.A.1	Livestock enteric fermentation	CH <sub>4</sub>	6,310.670	9,588.816	0.659
1.A.1	Energy industries – Solid fuels	CO <sub>2</sub>	4,850.490	9,162.233	0.759
3.C.4	Direct N <sub>2</sub> O emissions from managed soils	N <sub>2</sub> O	2,974.669	5,037.178	0.822
1.A.2	Manufacturing industries & construction – Solid fuels	CO <sub>2</sub>	1,900.909	1,135.016	0.867
1.A.3.b	Road transportation	CO <sub>2</sub>	1,142.456	1,637.168	0.892
1.A.4	Other sectors – Solid fuels	CO <sub>2</sub>	980.714	1,140.046	0.914
3.C.5	Indirect N <sub>2</sub> O emissions from managed soils	N <sub>2</sub> O	1,018.098	1,847.187	0.936
1.A.2	Manufacturing industries & construction – Liquid fuels	CO <sub>2</sub>	618.142	1,166.186	0.948

# Total GHG emissions indicators

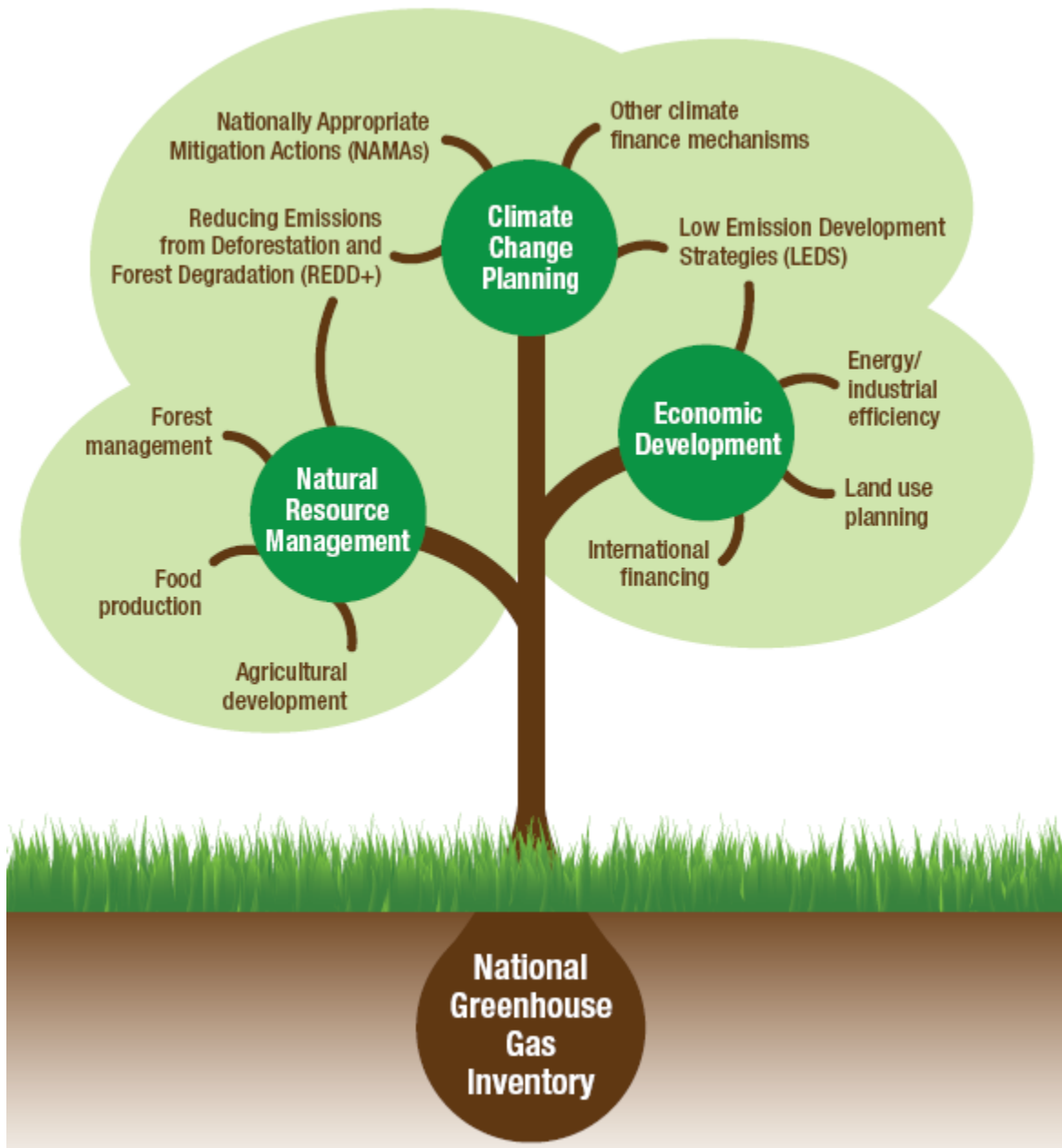
Indicators	Unit	1990	1995	2000	2005	2010	2014
<b>Total emissions (excl. LULUCF)</b>	Gg CO <sub>2</sub> e	21,950.73	20,778.97	19,449.40	19,843.41	24,222.94	34,482.73
<b>Population</b>	1000 person	2,153.47	2,243.00	2,403.11	2,551.08	2,760.97	2,995.95
<b>GHG emissions per capita</b>	tons CO <sub>2</sub> e/capita	10.19	9.26	8.09	7.78	8.77	11.51
<b>GDP*</b>	billion 2010 \$	3.85	3.35	3.84	5.25	7.19	11.41
<b>GHG emissions per GDP</b>	Kg CO <sub>2</sub> e/\$	5.70	6.20	5.06	3.78	3.37	3.02

\*Source: IEA Statistics

# International Consultation and Analysis (ICA)

## The Technical Analysis

- ❖ The technical analysis of the BUR took place from **4 to 8 December 2017** in Bonn, Germany.
- ❖ Following the technical analysis of Mongolia's first BUR, the TTE prepared and shared a draft summary report with Mongolia on **1 March 2018** for its review and comment. Mongolia, in turn, provided its feedback on the draft summary report on **25 May 2018**.
- ❖ The TTE responded to and incorporated the Party's comments and finalized the summary report in consultation with Mongolia on **6 June 2018**.



Thank you  
for your  
attention